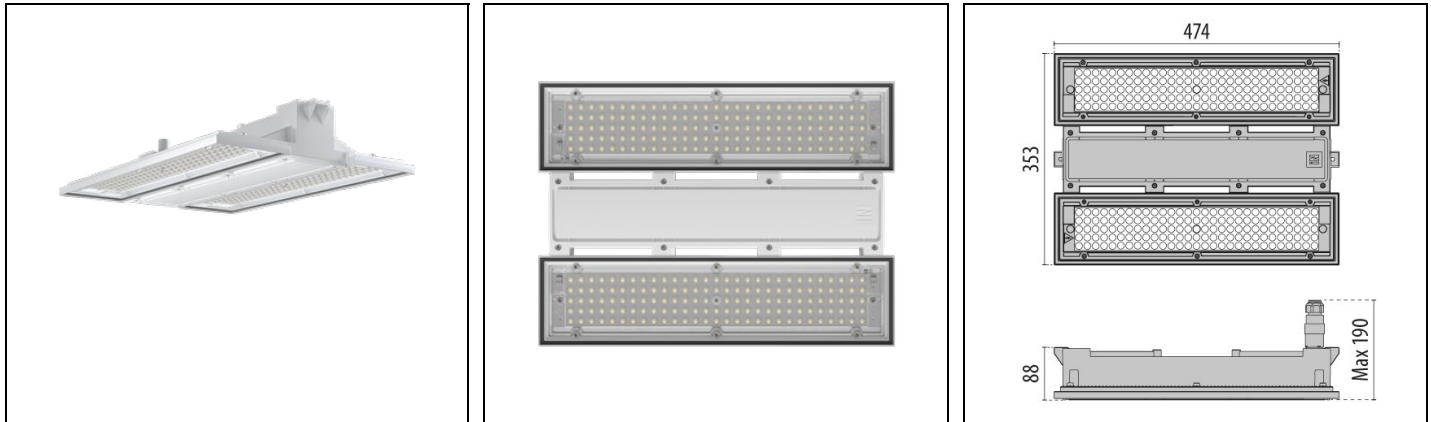


# LAMA+ 200

Part number LTH3155DP857



## Description

Suspended LED fixture for industrial lighting, for indoor use, consisting of:

- Die-cast aluminium housing, polyester powder coat finish ISO 9227/12944 - ISO 9223 (C5)
- UV and heat stabilised, technopolymer diffuser with integral custom moulded optics
- High-transparency polycarbonate optics
- S/W optic with UGR<25
- EPDM sealing gasket
- Technopolymer cable compartment cover
- Stainless steel suspension hook designed to be mounted on the fixture body quickly and without the use of tools to optimize installation time
- The IP66-rated socket-plug fast connector for mains connection without opening the luminaire. Made in PA66 with silver-plated brass contacts for cables Ø 9 - Ø 12 mm
- Stainless steel locking hardware
- The protective glass, available as accessory, shall be used in environments with mineral or natural oils or in atmospheres that are not compatible with polycarbonate
- Openable and maintainable luminaire (future-proof)
- The SOFT versions feature diffuser optics
- Appliance certified in accordance with the DIN 18032-2 standard, therefore suitable for installation in fitness centres or indoor sports structures
- Installation in gyms or sports facilities must be carried out using the mounting bracket or, if the fixtures must be suspended, using the specific carabiners. All these fastening elements are available as accessories
- Design by ROBERTO FIORATO

To maintain the regular updating of our products, PERFORMANCE iN LIGHTING reserves the right to make changes without prior notice. For the most up to date information we always recommend you read the latest version published on the website [www.performanceinlighting.com](http://www.performanceinlighting.com). Delivered luminaire lumen outputs and power consumptions, including losses, are subject to a tolerance of +/- 7%, and unless otherwise stated the values apply to an ambient temperature of 25°C. Terms of warranty are available at <https://www.performanceinlighting.com/qr/company/led-warranty>

Product data

ETIM Group:	EG000027	ETIM Class:	EC001716
-------------	----------	-------------	----------

General information

Lampholder:	LED	Light source:	LED
Lightsource lumen output [lm]:	37177	Luminaire lumen output [lm]:	32170
Luminaire wattage [W]:	184 W	Luminous efficacy [lm/W]:	175
CRI:	80	Colour temperature [K]:	5700
Colour / Finishing:	WH-87 / White / Textured	IP degree of protection:	IP66
Impact resistance / impact energy:	IK07 2.6J xx5	Protection class:	I
Optic:	S/EW - Symmetric Extra-Wide	Net weight [kg]:	4.549
Overall length [mm]:	475	Overall width [mm]:	353
Overall height [mm]:	133		

Mechanical features

Shape:	Rectangular	Housing material:	Aluminium
Diffuser material:	Plastic	Glow wire test [°C]:	750 °C

Electrical features

Voltage type:	AC/DC	Input voltage [V AC]:	198-264
Input frequency [Hz]:	0/50/60	Power factor / COS Φ:	0.99
Input voltage [V DC]:	176/250	Surge protection   Common [kV]:	4.000000
Inrush current [A/μs]:	15 / 4000	C10 1.5 mm²:	8
C16 2.5 mm²:	13	B10 1.5 mm²:	5
B16 2.5 mm²:	8		

Installation

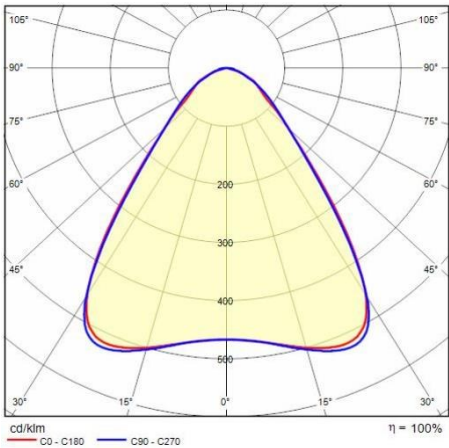
Application area:	Indoor	Mounting type:	High bay and low bay
Min. ambient temperature [°C]:	-40	Max. ambient temperature [°C]:	55

Light features

MacAdam:	3	Lumen maintenance:	L80B10@170000h
Distribution of light emission:	Direct		

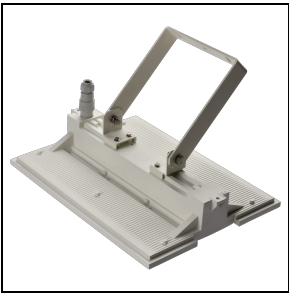
To maintain the regular updating of our products, PERFORMANCE in LIGHTING reserves the right to make changes without prior notice. For the most up to date information we always recommend you read the latest version published on the website [www.performanceinlighting.com](http://www.performanceinlighting.com). Delivered luminaire lumen outputs and power consumptions, including losses, are subject to a tolerance of +/- 7%, and unless otherwise stated the values apply to an ambient temperature of 25°C. Terms of warranty are available at <https://www.performanceinlighting.com/qr/company/led-warranty>

Photometric data



Optional accessories

LAMA+



**LTH3A2015**  
LAMA+ wall/ceiling bracket kit  
☐ WH-87 / White



**LTH3A2053**  
Stainless steel spring carabiner kit (2 pcs.)  
☒ INOX / Stainless steel



**LTH3A5033**  
Transparent protective glass IK 10  
☐ WH-87 / White

To maintain the regular updating of our products, PERFORMANCE iN LIGHTING reserves the right to make changes without prior notice. For the most up to date information we always recommend you read the latest version published on the website [www.performanceinlighting.com](http://www.performanceinlighting.com). Delivered luminaire lumen outputs and power consumptions, including losses, are subject to a tolerance of +/- 7%, and unless otherwise stated the values apply to an ambient temperature of 25°C. Terms of warranty are available at <https://www.performanceinlighting.com/qr/company/led-warranty>